

REQUARTH CO.

# MOULDING

STOCK CATALOG



V2/20

937-224-1141

**REQUARTH Co.**  
LUMBER, MILLWORK & KITCHENS Est. 1860

## Page Index

Moulding Type	Page
Architrave.....	30
Back Band .....	24
Base .....	34-39
Base Cap .....	33
Bead .....	22
Bed Mould .....	15
Brick Mould.....	42
Bullnose .....	21
Casings .....	24-28
Cant (Chamfer) .....	40
Cap Mould .....	22
Chair Rail .....	31
Cove .....	16
Crown .....	16-20
Drip Cap.....	42
Fascia .....	20
Glass Bead .....	22
Glossary .....	37
Half Round.....	21
Hand Rail.....	21
Lattice .....	41
Line Card.....	39
Moulding Collections .....	4-11
Mullion .....	40
Outside Corner .....	40
Panel Mould .....	22
Parting Stop.....	41
Pediment Mould .....	30
Plate Rail & Bracket.....	32
Plinth .....	30
Picture Mould .....	23
Quarter Round.....	21
S4S.....	42
Screen Stock .....	41
Shingle Mould.....	42
Shoe Mould .....	19
Stool.....	40
Stop.....	40
Stop Bead.....	21
Timeless Cabinetry .....	38
Water Table .....	42
What is Shiplap .....	29

## Pattern Index

Profile	Moulding Type	Page	Drawer
RQ30 .....	Fascia .....	20	A1
RQ32 .....	Bed Mould .....	15	A1
RQ38 .....	Bed Mould .....	15	A1
RQ40 .....	Crown .....	16	A1
RQ41 .....	Crown .....	16	A1
RQ42 .....	Cove .....	16	A1
RQ43 .....	Bed Mould .....	15	A1
RQ47 .....	Crown .....	19	A1
RQ48 .....	Crown .....	18-19	A2
RQ49 .....	Crown .....	17-18	A2
RQ51 .....	Crown .....	17	A2
RQ54 .....	Crown .....	16	A2
RQ63 .....	Crown .....	18	A2
RQ65 .....	Crown .....	19	A2
RQ67 .....	Crown .....	20	B1
RQ69 .....	Crown .....	20	B1
RQ71 .....	Crown .....	17	B1
RQ74 .....	Bed Mould .....	15	B1
RQ85 .....	Cove .....	16	B1
RQ94 .....	Cove .....	16	B1
RQ97 .....	Crown .....	18	B1
RQ98 .....	Crown .....	18	B1
RQ99 .....	Crown .....	20	B1
RQ100 .....	Cove .....	16	B2
RQ105 .....	Quarter Round .....	21	B2
RQ108 .....	Quarter Round .....	21	B2
RQ110 .....	Quarter Round .....	21	B2
RQ112 .....	Base Cap .....	33	B2
RQ122 .....	Half Round.....	21	B2
RQ126 .....	Shoe Mould .....	21	B2
RQ129 .....	Stop Bead.....	21	C1
RQ138 .....	Water Table.....	42	C1
RQ139 .....	Bullnose.....	21	C1
RQ142 .....	Screen Mould .....	22	C1
RQ144 .....	Panel Mould .....	22	C1
RQ145 .....	Panel Mould .....	22	C1
RQ146 .....	Panel Mould .....	22	C1
RQ148 .....	Glass Bead .....	22	C1
RQ149 .....	Panel Mould .....	22	C1
RQ150 .....	Panel Mould .....	22	C1
RQ152 .....	Bead .....	22	C1
RQ156 .....	Bead .....	22	C1
RQ157 .....	Base Cap .....	33	C1
RQ163 .....	Base Cap .....	33	C2
RQ166 .....	Base Cap .....	33	C2
RQ170 .....	Base Cap .....	33	C2
RQ172 .....	Picture Mould .....	23	C2
RQ175 .....	Picture Mould .....	23	C2

Profile	Moulding Type	Page	Drawer
RQ176 .....	Base Cap .....	33	C2
RQ180 .....	Brick Mould .....	42	C2
RQ186 .....	Base Cap .....	33	C2
RQ196 .....	Drip Cap .....	42	D1
RQ204 .....	Outside Corner .....	40	D1
RQ205 .....	Outside Corner .....	40	D1
RQ210 .....	Shingle Mould .....	42	D1
RQ230 .....	Hand Rail.....	21	D1
RQ239 .....	Parting Stop .....	41	D1
RQ246 .....	Cap Mould .....	22	D1
RQ248 .....	Screen Stock .....	41	D1
RQ250 .....	Screen Stock .....	41	D1
RQ254 .....	Parting Stop .....	41	D1
RQ256 .....	Cap Mould .....	22	D1
RQ265 .....	Lattice .....	41	D1
RQ267 .....	Lattice .....	41	D1
RQ271 .....	Backband .....	23	D2
RQ273 .....	Backband .....	23	D2
RQ279 .....	Backband .....	23	D2
RQ281 .....	Backband .....	23	D2
RQ283 .....	Backband .....	23	D2
RQ291 .....	Backband .....	23	D2
RQ292 .....	Cap Mould .....	22	D2
RQ317 .....	Casing .....	26	D2
RQ319 .....	Casing .....	25	D2
RQ321 .....	Casing .....	24	D2
RQ322 .....	Casing .....	25	D2
RQ327 .....	Casing .....	24	D2
RQ332 .....	Casing .....	25	D2
RQ333 .....	Casing .....	28	E1
RQ337 .....	Casing .....	27	E1
RQ341 .....	Casing .....	28	E1
RQ342 .....	Casing .....	27	E1
RQ345 .....	Casing .....	27	E1
RQ347 .....	Casing .....	27	E1
RQ351 .....	Casing .....	28	E1
RQ356 .....	Casing .....	24	E1
RQ361 .....	Casing .....	27	E1
RQ366 .....	Casing .....	24	E2
RQ371 .....	Casing .....	28	E2
RQ373 .....	Casing .....	25	E2
RQ375 .....	Casing .....	25	E2
RQ381 .....	Casing .....	25	E2
RQ383 .....	Casing .....	26	E2
RQ385 .....	Casing .....	26	E2
RQ388 .....	Casing .....	26	E2
RQ391 .....	Casing .....	28	E2
RQ393 .....	Casing .....	26	E2

Profile	Moulding Type	Page	Drawer
RQ396 .....	Casing .....	28	E2
RQ444 .....	Casing .....	26	F1
RQ461 .....	Plinth .....	30	F1
RQ500 .....	Pediment Mould .....	30	F1
RQ510 .....	Architrave.....	30	F1
RQ550 .....	Plate Rail .....	22	F1
RQ551 .....	Plate Rail Bracket .....	32	F1
RQ581 .....	Chair Rail.....	31	F1
RQ584 .....	Chair Rail.....	31	F1
RQ590 .....	Chair Rail.....	31	F1
RQ592 .....	Chair Rail.....	31	F1
RQ594 .....	Chair Rail.....	31	F1
RQ603 .....	Base .....	34	F2
RQ620 .....	Base .....	35	F2
RQ623 .....	Base .....	34	F2
RQ627 .....	Base .....	35	F2
RQ633 .....	Base .....	34	F2
RQ637 .....	Base .....	35	F2
RQ638 .....	Base .....	36	F2
RQ647 .....	Base .....	38	G1
RQ648 .....	Base .....	38	F2
RQ650 .....	Base .....	37	G1
RQ651 .....	Base .....	36	G1
RQ654 .....	Base .....	39	G1
RQ656 .....	Base .....	36	G1
RQ658 .....	Base .....	38	G1
RQ661 .....	Base .....	38	G2
RQ677 .....	Base .....	39	G2
RQ84S .....	Flat Stock.....	39	
RQ713 .....	Base .....	34	G2
RQ718 .....	Base .....	39	G2
RQ778 .....	Base .....	37	G2
RQ788 .....	Base .....	36	H1
RQ798 .....	Base .....	37	G2
RQ816 .....	Stop .....	40	H1
RQ927 .....	Stop .....	40	H1
RQ936 .....	Stop .....	40	H1
RQ937 .....	Stop .....	40	H1
RQ983 .....	Mullion .....	40	H1
RQ990 .....	Nickel Cap .....	40	?
RQ995 .....	Cant (Chamfer) .....	40	H1
RQ999 .....	Ceiling/Wall .....	40	?
RQ1197 .....	Stool.....	40	H1

## DIGITAL FILES

Find digital files of every moulding we stock at:  
[www.rqmmouldings.com/downloads](http://www.rqmmouldings.com/downloads)

Files Available: CAD/DWG, Revit, SketchUp and PDF

**937-224-1141**

- Requarth Co. 2020 Stock Moulding Catalog

Requarth Co.  
447 E. Monument Ave.  
Dayton, Ohio 45402

## Getting Your Interior Trim Right

It is important to get your interior trim right. Your interior trim includes the base moulding. The moulding that runs along the bottom of the wall right at the floor. It also includes your casing, the trim that surrounds your window and door openings. Sometimes it includes your crown moulding, that moulding that runs along the top of the wall right at the ceiling.

It is very important when you are selecting your interior trim to get both the style and proportions correct. Craftsman style homes are very popular today, but I often walk into a Craftsman style home and see Colonial style mouldings. Colonial is also a very popular style that offers a lot of options, but it is out of place in a Craftsman style home because it lacks the simple clean lines that define the Craftsman style. When you walk into the home you may notice something is wrong with the room, you may have trouble putting your finger on it, but it is the style of the home and the interior trim are out of sync.

The same is true of proportions. A lot of home owners like a big tall base or a big crown moulding, but in a room with 8' ceiling they can make the room feel cramped. Likewise if you have tall ceilings, mouldings that are too small can make the room feel diminished and lack the dramatic appeal of a room with tall ceilings.

The good news is the right style and proportioned interior trim usually does not cost any more. It just requires a little more attention to detail

## Historically Accurate Moulding Size Guide

Ceiling	Base	Casing	Crown	Cornice	Crown & Picture
8' - 9'	3¼"-5½"	2¼"-4"	2½"	6"	8"
10' -11'	5½"-8"	4"-6"	3"-4"	7½"-8"	9"-10"
12' +	8" - 10"	7-8"	-	9"	11"-12"

BASE BOARD: 7% of the wall height

CASING: 75% of the Base Board



NOW STOCKING  
MODERN MOULDINGS



M COLLECTION  
*by Alexandria*



NEW MODERN PROFILES IN STOCK. ADDITIONAL MODERN PROFILES ARE AVAILABLE UPON REQUEST.

**CASING**

**ARCHITRAVE**

**BASEBOARD**

**CROWN**



**RQ319**  
5/8" x 2-1/2"



**RQ347**  
3/4" x 3-1/2"



**RQ345**  
3/4" x 3-1/2"



**RQ510**  
1" x 4-1/2"



**RQ656**  
1/2" x 4-3/4"



**RQ654**  
5/8" x 5-1/2"



**RQ98**  
9/16" x 4-1/4"



**RQ97**  
5/8" x 4-1/2"



**RQ99**  
9/16" x 5-1/4"

# Timeless

CABINETRY BY REQUARTH CO.



## Requarth Cabinetry

- Built in Downtown Dayton
- Designed for your space
- Utilizing green construction practices
- Producing exceptional quality

**Requarth Co. | 937-224-1141**

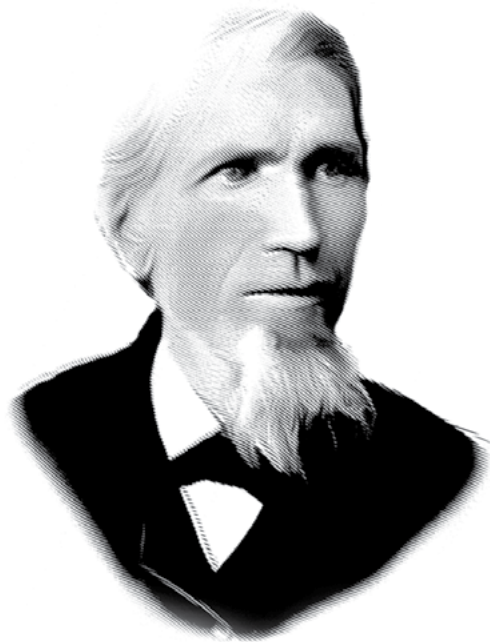
On Monument Ave. across from Fifth Third Field  
Monday - Friday: 7 am - 5 pm, Saturday: 7 am - 2 pm  
[timelesscabinetry.us](http://timelesscabinetry.us)

**Requarth Co. - Every Job Done Right.**

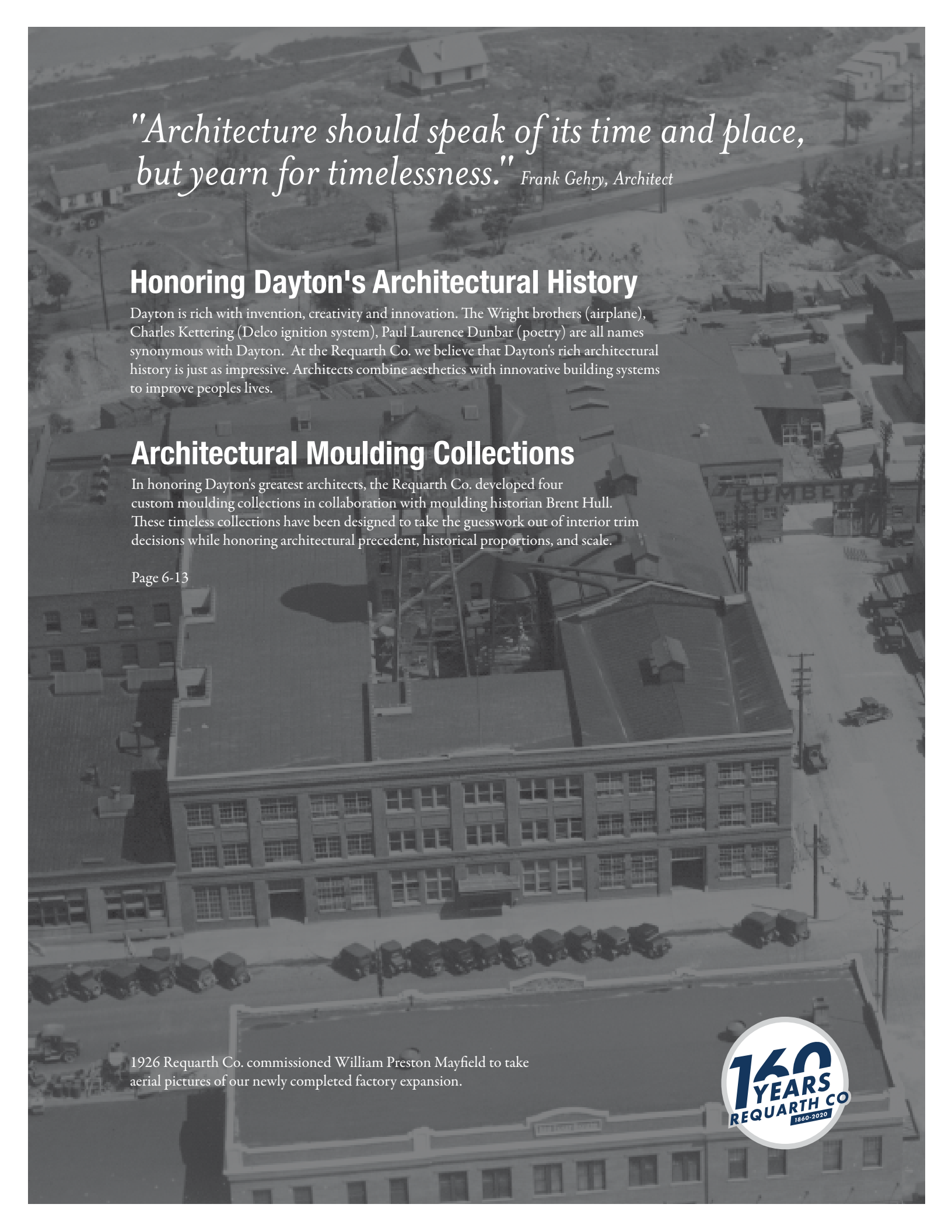
**Requarth Co. tours available upon request.**

# REQUARTH MOULDING

## STOCK CATALOG



FREDERICK AUGUST REQUARTH  
*Founded the Requarth Co. 1860*



*"Architecture should speak of its time and place,  
but yearn for timelessness."* Frank Gehry, Architect

## Honoring Dayton's Architectural History

Dayton is rich with invention, creativity and innovation. The Wright brothers (airplane), Charles Kettering (Delco ignition system), Paul Laurence Dunbar (poetry) are all names synonymous with Dayton. At the Requarth Co. we believe that Dayton's rich architectural history is just as impressive. Architects combine aesthetics with innovative building systems to improve peoples lives.

## Architectural Moulding Collections

In honoring Dayton's greatest architects, the Requarth Co. developed four custom moulding collections in collaboration with moulding historian Brent Hull. These timeless collections have been designed to take the guesswork out of interior trim decisions while honoring architectural precedent, historical proportions, and scale.

Page 6-13

1926 Requarth Co. commissioned William Preston Mayfield to take aerial pictures of our newly completed factory expansion.





# ARCHITECTURAL COLLECTIONS HISTORICALLY ACCURATE MOULDING

## Harry Schenck

DAYTON ARCHITECT, ACTIVE: 1910s - 1950s

When Dayton was growing as a hub of innovation at the turn of the century, architect Harry Schenck, an original charter member of The Engineers Club, launched his prolific career. Dayton native Schenck and his Cornell University schoolmate Harry Williams started working for architect Frank Mills Andrews. Schenck and Williams eventually opened their own office in 1906 and became known as the designers for some of Dayton's most powerful and influential leaders.

### NOTABLE PROJECTS

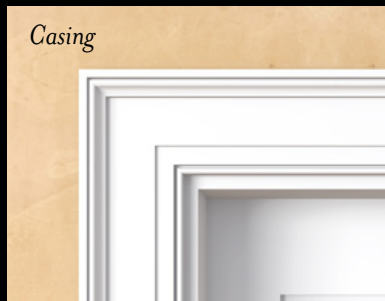
- WRIGHT BROTHERS HOME, HAWTHORN HILL
- ENGINEERS CLUB OF DAYTON
- NEWMAN-EDWARDS HOUSE
- LIBERTY TOWER (DAYTON)
- CHARLES F. KETTERING HOUSE



Interior View



Casing



Base



Cornice



Chair Rail



## HARRY SCHENCK COLLECTION *Neoclassical Style*

**937-224-1141**

6 - Requarth Co. 2020 Stock Moulding Catalog

Requarth Co.  
447 E. Monument Ave.  
Dayton, Ohio 45402



**Neoclassical**

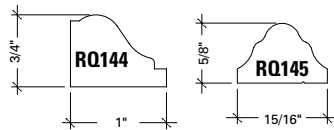
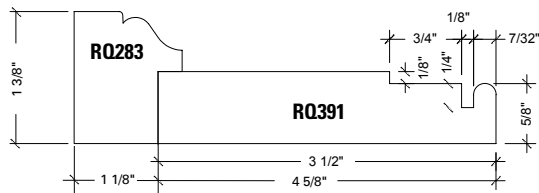
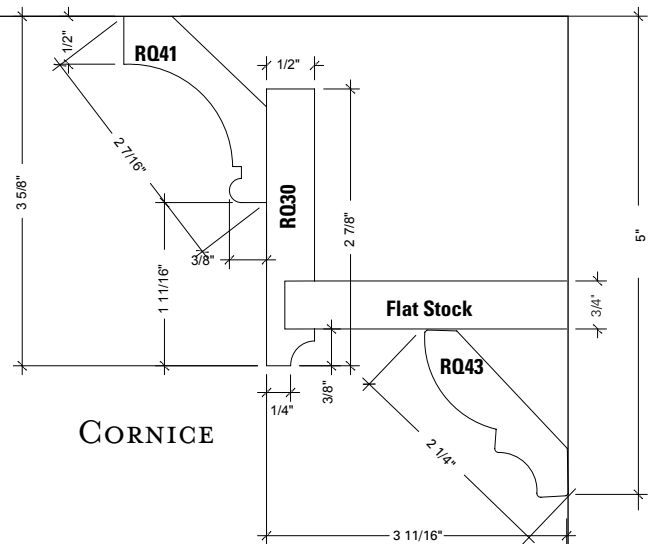
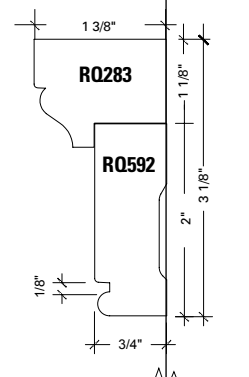
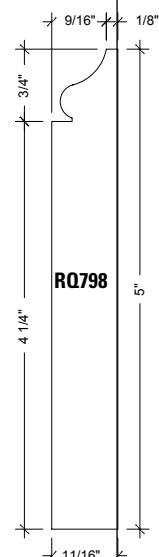
Neoclassical buildings defining characteristics are clean, elegant lines, uncluttered appearance, and free standing columns. Neoclassical architecture looks back to building in its purest form: the classical Greek temple.

**SCALABLE TO YOUR PROJECT**
**9' - 10' CEILING HEIGHT**

Casing ..... RQ391 + RQ283  
 Cornice ..... RQ41 + RQ30 + 1"x4" Flat Stock + RQ43  
 Panel Mould ..... RQ144, RQ145  
 Base ..... RQ798  
 Chair Rail ..... RQ592 + RQ283

**8' CEILING HEIGHT**

Casing ..... RQ592 + RQ283  
 Cornice ..... RQ41 + RQ391  
 Panel Mould ..... RQ144 or RQ145  
 Base ..... RQ788 (Page 37)  
 Chair Rail ..... RQ592 + RQ283


**PANEL MOULD**

**CASING**

**CORNICE**

**CHAIR RAIL**

**BASE**

*Interior View Two*
*Harry Schenck Collection with full wall panels*
**Every Job Done Right.**

# ARCHITECTURAL COLLECTIONS HISTORICALLY ACCURATE MOULDING

## Albert Pretzinger

DAYTON ARCHITECT, ACTIVE: 1890s-1930s

Some of downtown Dayton's most iconic buildings, including the former Dayton Daily News building, are tied to the Pretzinger family name. After DDN founder James Cox was turned down for a loan to start the paper by a local bank, Cox asked Pretzinger to "build him a damn bank." The structure was modeled after the Knickerbocker Trust building in New York City.



### NOTABLE PROJECTS

- DAYTON DAILY NEWS BUILDING
- FIRST LUTHERAN CHURCH,
- DUNCARRICK MANSION
- REIBOLD BUILDING

Interior View



Casing



Crown & Picture Mould



Cornice



Chair Rail



## ALBERT PRETZINGER COLLECTION *Modern Bungalow Style*

**937-224-1141**

8 - Requarth Co. 2020 Stock Moulding Catalog

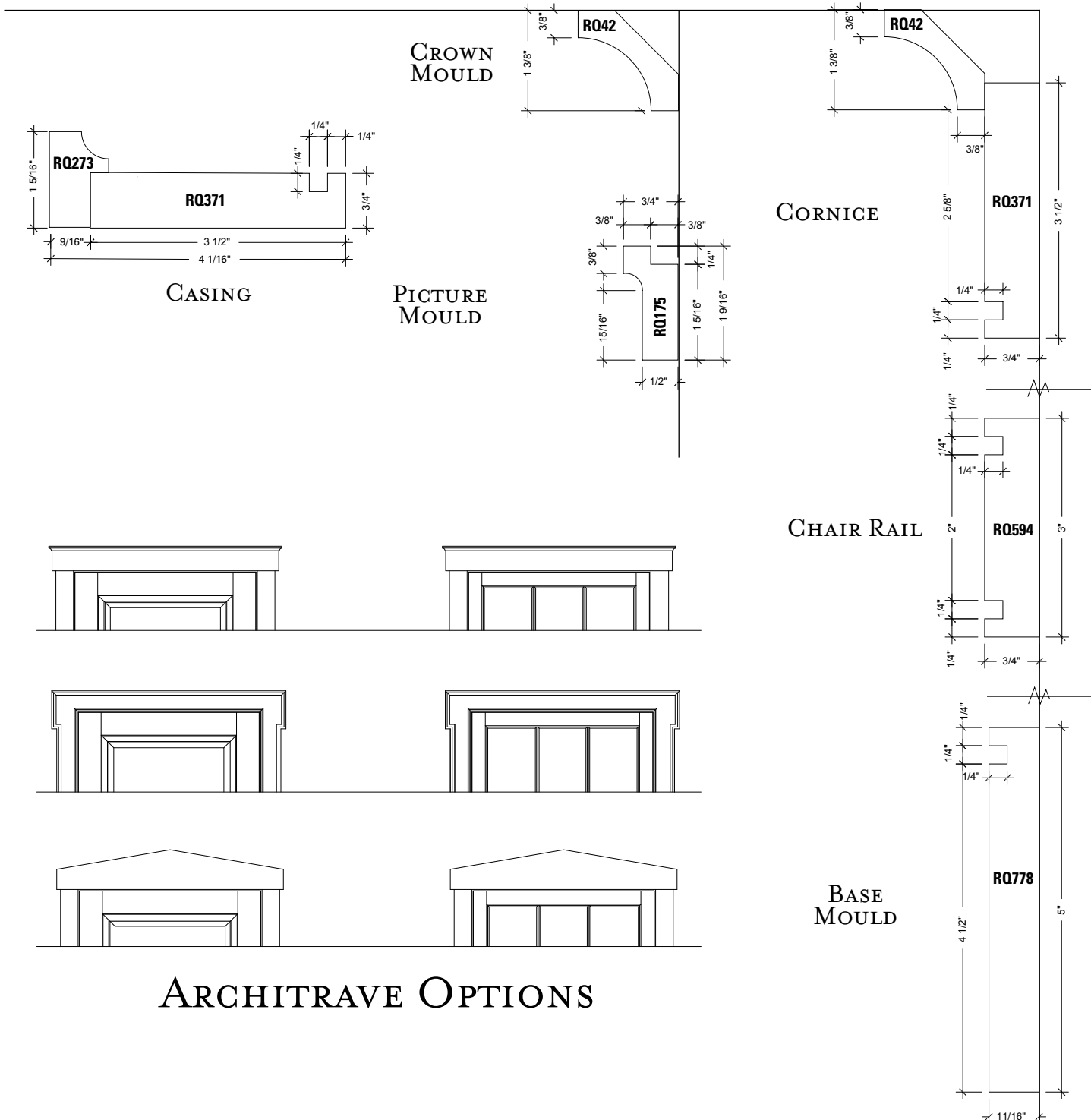
Requarth Co.  
447 E. Monument Ave.  
Dayton, Ohio 45402

**Modern Bungalow**

The Arts & Crafts movement embraced simple lines, humble materials, and rejected the idea of mass production. With its overwhelming sense of the handmade it is the opposite of classical revival. This movement is also known as "Craftsman."

**SCALABLE TO YOUR PROJECT**
**8' - 9' CEILING HEIGHT**

Casing .....	RQ371 + RQ273
Cornice .....	RQ371, RQ42
Crown .....	RQ42
Picture Mould .....	RQ175
Base .....	RQ778
Chair Rail .....	RQ594


**ARCHITRAVE OPTIONS**



# ARCHITECTURAL COLLECTIONS

## HISTORICALLY ACCURATE MOULDING

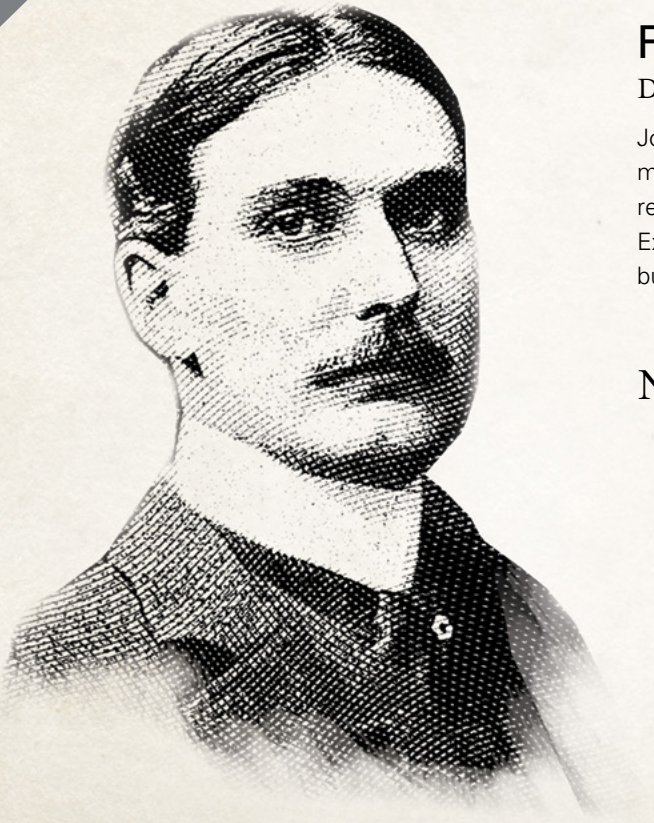
### Frank Mills Andrews

DAYTON ARCHITECT, ACTIVE: 1860s - 1930s

John Patterson wanted to create a space for downtown's growing marketplace, and commissioned Andrews to design a place that resembled Andrews' Dutch Guild Hall from the World's Columbian Exposition of 1893. That marketplace – the Dayton Arcade – still stands, but the vacant, deteriorating structure faces an uncertain future.

### NOTABLE PROJECTS

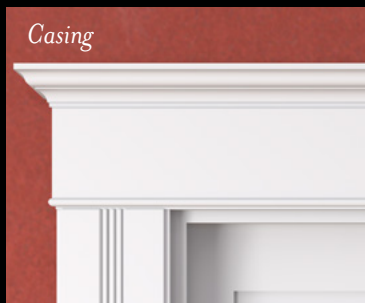
- DAYTON ARCADE
- NATIONAL CASH REGISTER, POWER HOUSE
- KENTUCKY STATE CAPITOL
- GEORGE WASHINGTON HOTEL  
(New York City)
- COLUMBIA CLUB  
(Indianapolis)



Interior View



Casing



Base



Cornice



Plate Rail



## FRANK MILLS ANDREWS COLLECTION *Late Victorian Style*

**937-224-1141**

10 - Requarth Co. 2020 Stock Moulding Catalog

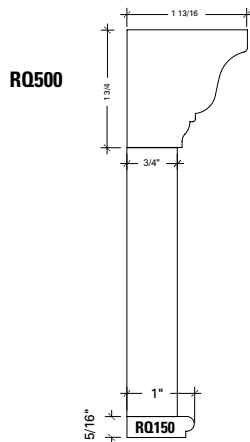
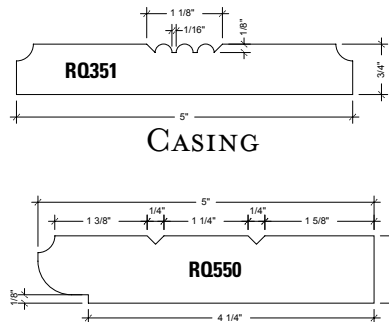
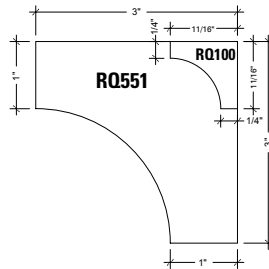
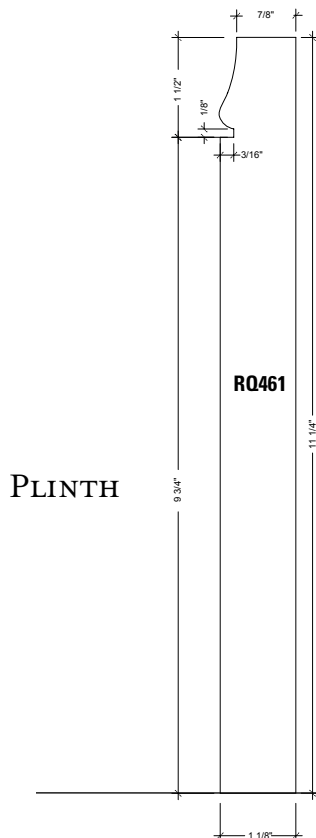
Requarth Co.  
447 E. Monument Ave.  
Dayton, Ohio 45402

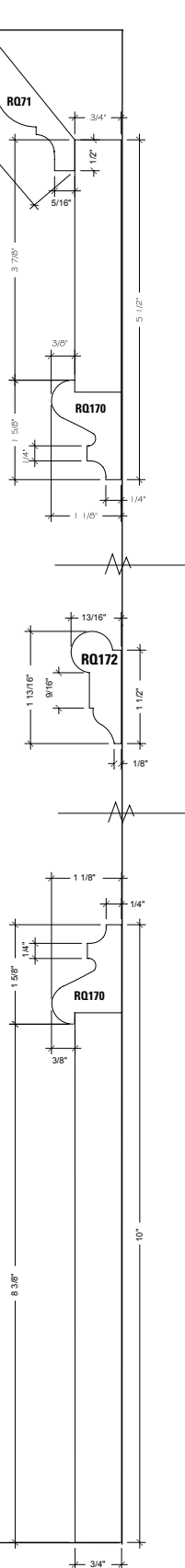
**Late Victorian**

Victorian design is widely viewed as indulging in ornament. A bare room was considered to be in poor taste, so every surface was filled with objects that reflected the owner's interests and aspirations.

**SCALABLE TO YOUR PROJECT**
**9' - 10' CEILING HEIGHT**

Casing .....	RQ351
Cornice .....	RQ71 + RQ170 + 3/4" Flat Stock
Picture Mould .....	RQ172
Base .....	RQ112 + 3/4" Flat Stock or RQ170 + 3/4" Flat Stock
Plinth .....	RQ461
Plate Rail .....	RQ550 + RQ551 + RQ100
Architrave .....	RQ500 + 3/4" Flat Stock + RQ149


**ARCHITRAVE**

**CASING**
**PLATE RAIL**

**PLATE RAIL  
BRACKET**

**PLINTH**
**BASE  
MOULD A**

**BASE  
MOULD B**

**CORNICE**
**PICTURE  
MOULD**



# ARCHITECTURAL COLLECTIONS

## HISTORICALLY ACCURATE MOULDING

### Charles Insko Williams

DAYTON ARCHITECT, ACTIVE: 1870s-1910s

Raised as an artist and formally trained as an architect, Charles Insko Williams proved time and again how beauty could inform design that served its purpose functionally. Williams worked for the Northern Pacific Railroad as a civil engineer before he returned to his native Dayton. Here, he found employment in his brother-in-law's jewelry shop and as an artist. Williams opened his own office as an architect in 1882 and is cited in historical documents as "one of the most prominent representatives of this calling not only in Dayton, but in the state."



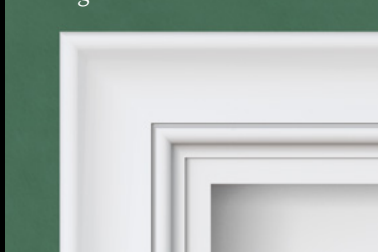
### NOTABLE PROJECTS

- SACRED HEART CHURCH
- DAYTON YMCA BUILDING
- DAYTON CITY CLUB
- INSCO APARTMENT BUILDING
- STIVERS SCHOOL FOR THE ARTS

*Interior View*



*Casing*



*Crown*



*Base*



CHARLES INSCO WILLIAMS COLLECTION *Mid Century Style*

**937-224-1141**

12 - Requarth Co. 2020 Stock Moulding Catalog

Requarth Co.  
447 E. Monument Ave.  
Dayton, Ohio 45402



**Mid Century**

Characterized by clean simplicity and integration with nature. Mid-Century architecture sought to bring the outdoors in to interior spaces. Frequently it was employed in residential structures with the goal of bringing modernism into America's post-war suburbs.

**SCALABLE TO YOUR PROJECT**

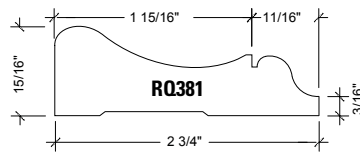
**8' - 9' CEILING HEIGHT**

Moulding ..... RQ

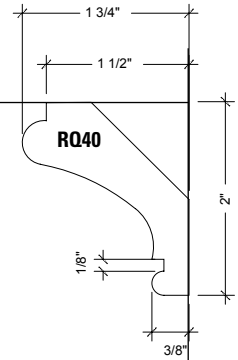
Casing ..... RQ381

Crown ..... RQ40

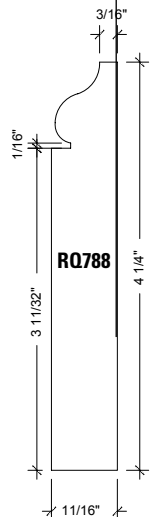
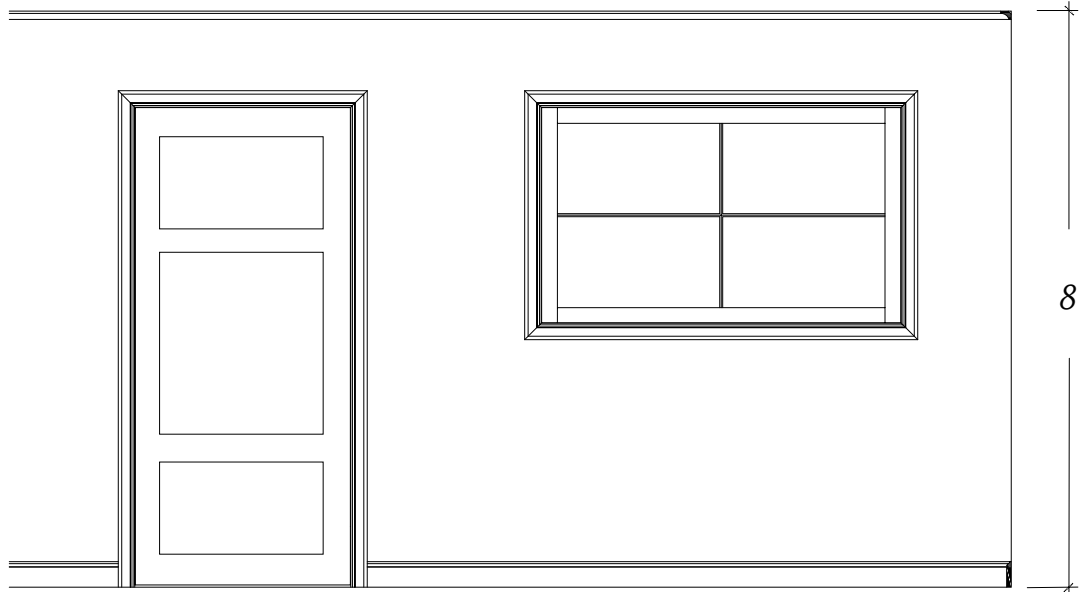
Base ..... RQ788



**CASING**



**CROWN  
MOULD**



**BASE  
MOULD**

## Requarth Co. Mill Shop

When off-the-shelf solutions won't work, Requarth's renowned millwork shop will help you meet the challenge. Residential and commercial remodeling contractors and property maintenance professionals value our expertise and precision. Custom moulding and siding profiles — both original and historical can be created or matched to an original.

Our industrial customers turn to us for exactly the products they require. Plywood of any thickness and type can be sawn into custom shapes or strips. Custom wood wedges, blocks and rounds are manufactured to specifications. We are full service and quality driven.

## Custom Mill Services

- *Planing S4S, S3S, S2S, S1S*
- *Pattern Matching*
- *Historical Reproduction*
- *Glueups*
- *Wood Counter tops*
- *Corbel Cuts*
- *Knee Braces*
- *Shiplap Siding*
- *Bevel Siding*
- *Cabinets*
- *Many other custom mill services*

## Custom Mouldings

You may also select from a wide variety of unique patterns that have been developed over a century of Requarth millwork. Experienced craftsman are ready to help you with all your millwork needs.

- *Bead and Panel*
- *Base Cap*
- *Cove*
- *Circle-Top Casing*
- *Fluted Jamb*
- *Crown*
- *Casing*
- *Base*

## Timeless Custom Cabinet Shop

The Requarth Co. cabinet shop has perfected the fusion of good design, and modern computerized precision manufacturing with time-tested, old-world, hands-on fitting and finishing.

For more information on our Timeless custom cabinets visit: [timelesscabinetry.us](http://timelesscabinetry.us) or contact the kitchen design team.

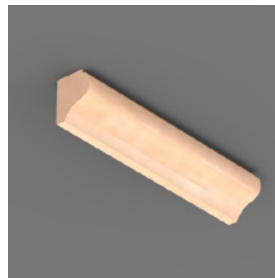
Requarth Co. Stock Moulding Catalog contains profiles the Requarth Co. keeps stocked in our on-site warehouse. We also have the capability to order hundreds of additional moulding profiles to meet your unique needs. If you do not see what you are looking for in this catalog ask a Requarth Co. sales representative to see additional profiles.

## BED MOULD

POP Poplar, WP Pine, PFJ Primed Finger jointed, RO Red Oak, MDF Medium Density fiberboard

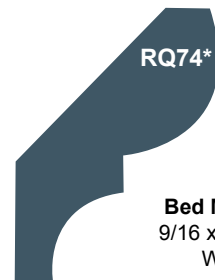
**RQ32**

**Bed Mould**  
3/4" x 7/8"  
POP



**RQ74\***

**Bed Mould**  
9/16 x 1-3/4"  
WP



**RQ38**

**Bed Mould**  
9/16 x 1-25/32"  
POP

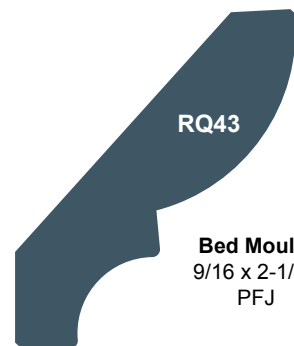


**Neoclassical**



**RQ43**

**Bed Mould**  
9/16 x 2-1/4"  
PFJ





## COVES & CROWN MOULDINGS

POP Poplar, WP Pine, PFJ Primed Finger jointed, RO Red Oak, MDF Medium Density fiberboard

### Late Victorian



**RQ100**

**Cove**  
11/16 x 11/16"  
PFJ, WP

**RQ94**

**Cove**  
11/16 x 1-1/8  
WP

**RQ85**

**Cove**  
9/16 x 1-3/4  
WP

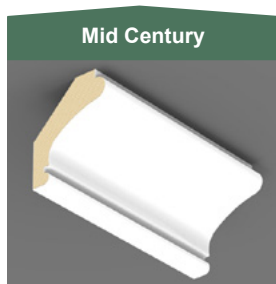
**RQ42**

**Cove**  
9/16 x 1-15/16  
PFJ

### Modern Bungalow



### Mid Century



### Neoclassical



**RQ54\***

**Crown**  
9/16 x 2-1/4  
WP

**RQ40**

**Crown**  
3/4 x 2-1/2  
PFJ

**RQ41**

**Crown**  
3/4 x 2-7/16  
PFJ

**937-224-1141**

16 - Requarth Co. Stock Moulding Catalog

Requarth Co.  
447 E. Monument Ave.  
Dayton, Ohio 45402

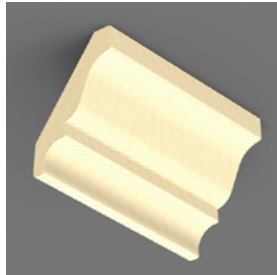
# CROWN MOULDINGS

POP Poplar, WP Pine, PFJ Primed Finger jointed, RO Red Oak, MDF Medium Density fiberboard

**REQUARTH Co.** Est. 1860  
LUMBER, MILLWORK & KITCHENS

RQ51\*

**Crown**  
9/16 x 3-1/4  
WP



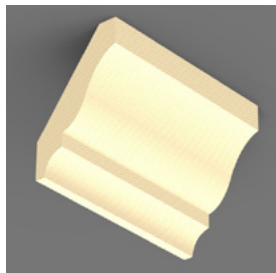
RQ71\*

**Crown**  
5/8 x 3-1/4  
PFJ, MDF



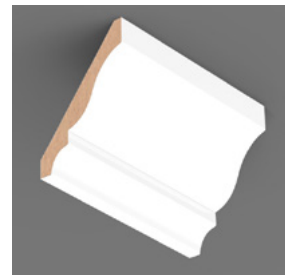
RQ49

**Crown**  
9/16 x 3-5/8  
WP



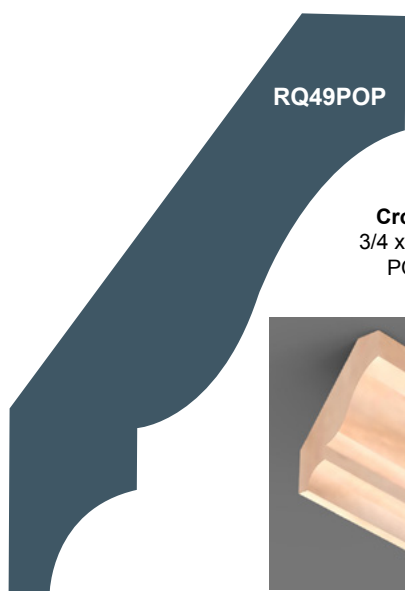
RQ49MDF

**Crown**  
1/2 x 3-5/8  
MDF



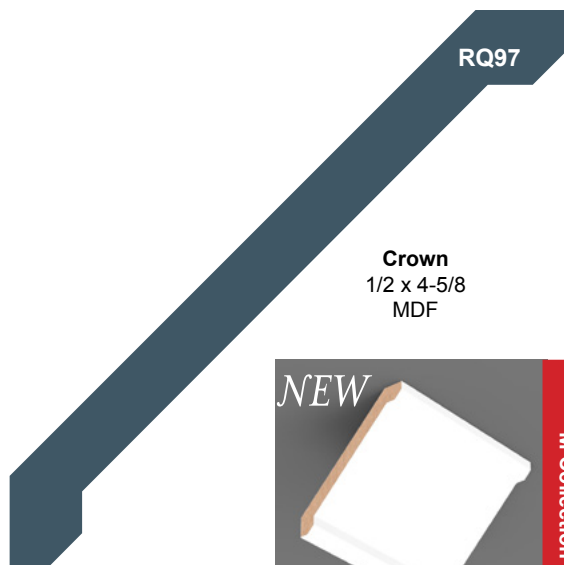
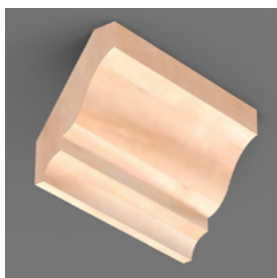
## CROWN MOULDINGS

POP Poplar, WP Pine, PFJ Primed Finger jointed, RO Red Oak, MDF Medium Density fiberboard



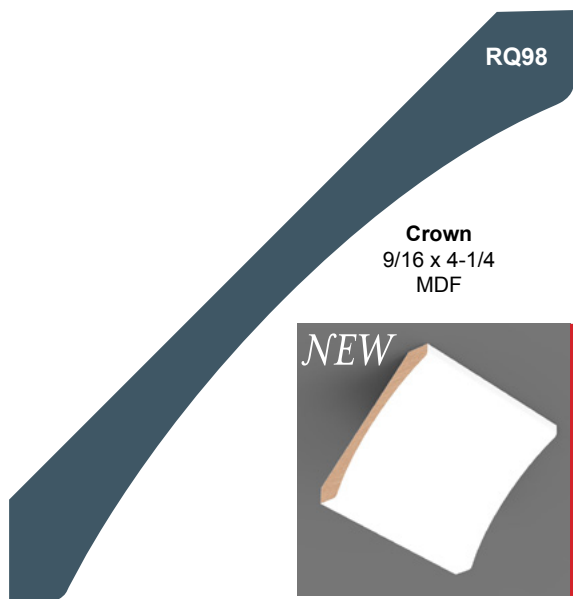
RQ49POP

**Crown**  
 3/4 x 3-5/8  
 POP



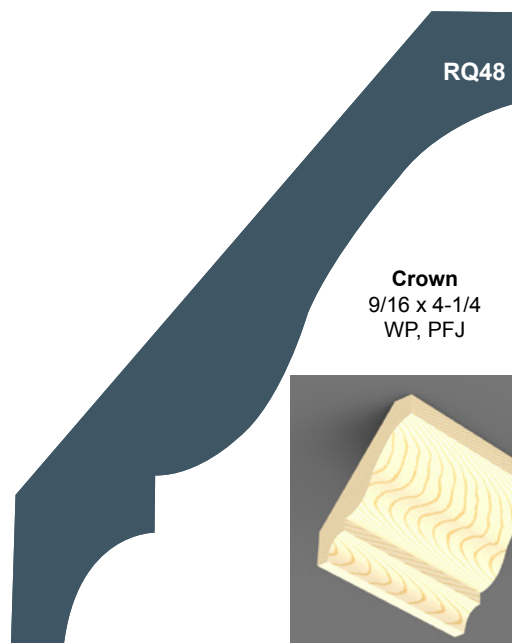
RQ97

**Crown**  
 1/2 x 4-5/8  
 MDF



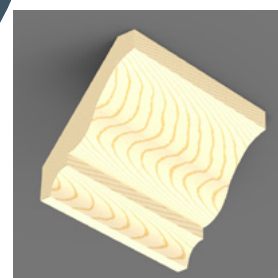
RQ98

**Crown**  
 9/16 x 4-1/4  
 MDF



RQ48

**Crown**  
 9/16 x 4-1/4  
 WP, PFJ



**937-224-1141**

18 - Requarth Co. Stock Moulding Catalog

Requarth Co.  
 447 E. Monument Ave.  
 Dayton, Ohio 45402



# CROWN MOULDINGS

POP Poplar, WP Pine, PFJ Primed Finger jointed, RO Red Oak, MDF Medium Density fiberboard

**REQUARTH Co.**  
Est. 1860  
LUMBER, MILLWORK & KITCHENS

RQ48MDF\*

**Crown**  
5/8 x 4-1/4  
MDF



RQ63

**Crown**  
3/4 x 4-1/4  
PFJ



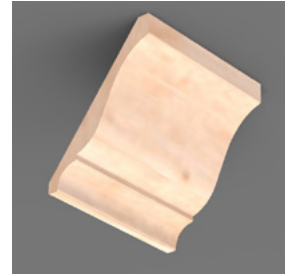
RQ65

**Crown**  
3/4 x 5-1/4  
PFJ, MDF



RQ47\*

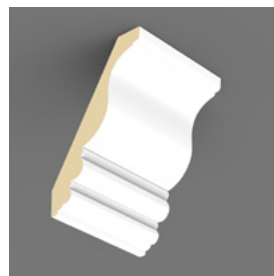
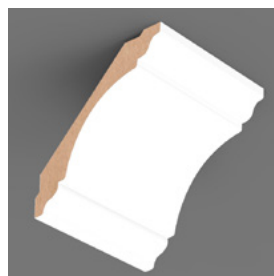
**Crown**  
5/8 x 5-1/4  
POP, PFJ,  
MDF



# FASCIA & CROWN MOULDINGS

POP Poplar, WP Pine, PFJ Primed Finger jointed, RO Red Oak, MDF Medium Density fiberboard

## M Collection



**Crown**  
11/16 x 5-1/4  
MDF

RQ99\*

RQ69

RQ67

**Crown**  
1 x 6-3/8  
MDF

**Crown**  
1 x 6-1/4  
PFJ

RQ30

## Neoclassical



**Fascia**  
1/2" x 2-7/8"  
25/32 Dado  
PFJ

**937-224-1141**

20 - Requarth Co. Stock Moulding Catalog

Requarth Co.  
447 E. Monument Ave.  
Dayton, Ohio 45402

# TRIM

POP Poplar, WP Pine, PFJ Primed Finger jointed, RO Red Oak, MDF Medium Density fiberboard

**REQUARTH Co.** Est. 1860  
LUMBER, MILLWORK & KITCHENS



**QUARTER  
ROUND**  
3/4 x 3/4  
POP, WP

**RQ105**



**QUARTER  
ROUND**  
1/2 x 1/2  
WP

**RQ108**



**QUARTER  
ROUND**  
1/4 x 1/4  
WP

**RQ110**



**Shoe**  
1/2 x 3/4  
POP, WP,  
PFJ, RO

**RQ126**



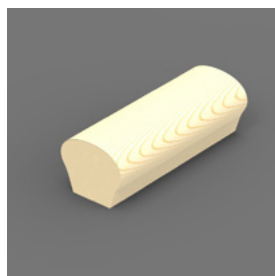
**RQ122**

**Half Round**  
3/8 x 11/16  
WP



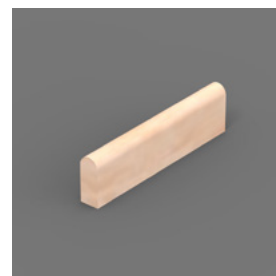
**RQ129**

**Stop Bead**  
3/8 x 3/4  
POP



**RQ230**

**Hand Rail**  
1-1/2 x 1-9/16  
WP



**RQ139**

**Bullnose**  
1/2 x 1-1/4  
POP

# TRIM

POP Poplar, WP Pine, PFJ Primed Finger jointed, RO Red Oak, MDF Medium Density fiberboard



**RQ142**

**Screen Mould**  
1/4 x 3/4  
WP



**Neoclassical**

**RQ144**

**Panel Mould**  
3/4 x 1  
PFJ



**Neoclassical**

**RQ145**

**Panel Mould**  
5/8 x 15/16  
PFJ



**RQ146**

**Panel Mould**  
9/16 x 1-1/2  
PFJ



**RQ148**

**Glass Bead**  
7/16 x 9/16  
WP



**RQ149**

**Panel Mould**  
11/16 x 1-1/2  
POP



**RQ150**

**Panel Mould**  
15/16 x 1  
PFJ



**RQ152**

**Bead**  
23/32 x 23/32  
POP



**RQ156**

**Bead**  
11/16 x 1  
POP



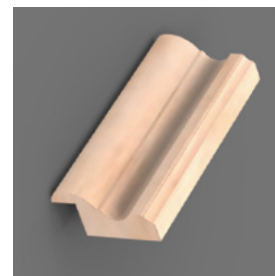
**RQ292\***

**Cap Mould**  
9/16 x 1-1/8  
WP



**RQ246**

**Cap Mould**  
13/16 x 2  
POP



**RQ256**

**Cap Mould**  
1 x 2  
POP

**937-224-1141**

22 - Requarth Co. Stock Moulding Catalog

Requarth Co.  
447 E. Monument Ave.  
Dayton, Ohio 45402



# PICTURE & BACKBANDS

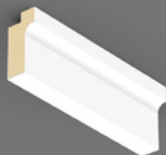
POP Poplar, WP Pine, PFJ Primed Finger jointed, RO Red Oak, MDF Medium Density fiberboard

**REQUARTH Co.** Est. 1860  
LUMBER, MILLWORK & KITCHENS

Late Victorian



Modern Bungalow



*NEW*



RQ172



**Picture Mould**  
3/4 x 1-3/4  
POP

RQ175



**Picture Mould**  
3/4 x 1-9/16  
PFJ

RQ271



**Backband**  
3/4 x 1  
POP

RQ279



**Backband**  
7/8 x 1-5/16  
MDF

Modern Bungalow



Neoclassical



RQ273



**Backband**  
13/16 x 1-5/16  
PFJ

RQ283



**Backband**  
1-1/8 x 1-3/8  
PFJ

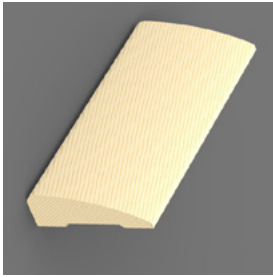
RQ291



**Backband**  
1-1/8 x 1-5/8  
POP

## WINDOW & DOOR MOULDING

POP Poplar, WP Pine, PFJ Primed Finger jointed, RO Red Oak, MDF Medium Density fiberboard



**Casing**  
11/16 x 2-1/4  
WP

RQ327\*



**Casing**  
5/8 x 2-1/4  
MDF

RQ356MDF\*



**Casing**  
11/16 x 2-1/4  
PFJ, WP

RQ356\*



**Casing**  
5/8 x 2-1/4  
MDF

RQ366MDF



**Casing**  
11/16 x 2-1/4  
POP, PFJ, WP

RQ366\*



**Casing**  
11/16 x 2-1/4  
POP

RQ321



**937-224-1141**

# WINDOW & DOOR MOULDING

POP Poplar, WP Pine, PFJ Primed Finger jointed, RO Red Oak, MDF Medium Density fiberboard

**REQUARTH Co.**  
Est. 1860  
LUMBER, MILLWORK & KITCHENS



**Casing**  
13/16 x 2-1/4  
POP



**Casing**  
5/8 x 2-1/2  
MDF



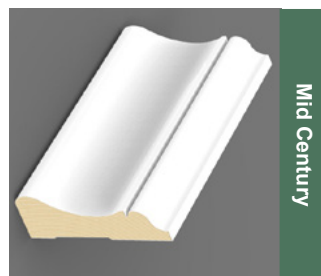
**Casing**  
13/16 x 2-5/8  
POP



**Casing**  
3/4 x 2-3/4  
PFJ



**Casing**  
3/4 x 2-3/4  
PFJ, MDF

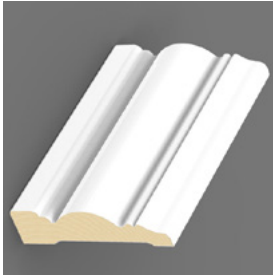


**Casing**  
3/4 x 2-3/4  
PFJ



## WINDOW & DOOR MOULDING

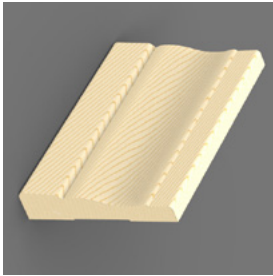
POP Poplar, WP Pine, PFJ Primed Finger jointed, RO Red Oak, MDF Medium Density fiberboard



**Casing**  
3/4 x 3  
PFJ



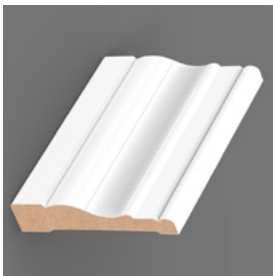
**Casing**  
5/8 x 3-1/4  
MDF



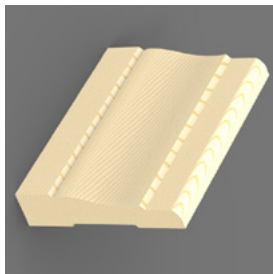
**Casing**  
11/16 x 3-1/4  
WP, PFJ



**Casing**  
3/4 x 3-1/4  
MDF



**Casing**  
18mm x 3-1/2  
MDF



**Casing**  
11/16 x 3-1/2  
WP, PFJ



**937-224-1141**



# WINDOW & DOOR MOULDING

POP Poplar, WP Pine, PFJ Primed Finger jointed, RO Red Oak, MDF Medium Density fiberboard

**REQUARTH Co.**  
Est. 1860  
LUMBER, MILLWORK & KITCHENS



**Casing**  
3/4 x 3-1/2  
MDF

RQ345



**Casing**  
3/4 x 3-1/2  
MDF

RQ347



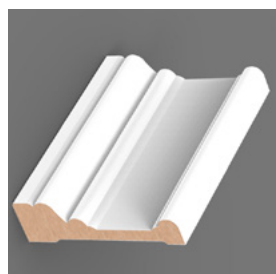
**Casing**  
3/4 x 3-1/2  
MDF

RQ337MDF



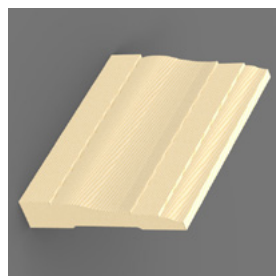
**Casing**  
3/4 x 3-1/2  
PFJ

RQ337



**Casing**  
3/4 x 3-1/2  
PFJ

RQ342\*

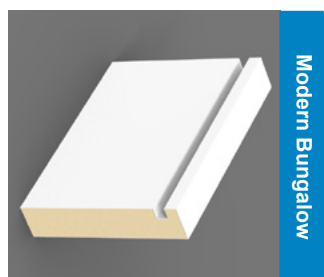


**Casing**  
3/4 x 3-1/2  
WP, PFJ

RQ361

## WINDOW & DOOR MOULDING

POP Poplar, WP Pine, PFJ Primed Finger jointed, RO Red Oak, MDF Medium Density fiberboard



Modern Bungalow

**Casing**  
3/4 x 3-1/2  
PFJ

RQ371



Neoclassical

**Casing**  
3/4 x 3-1/2  
PFJ

RQ391



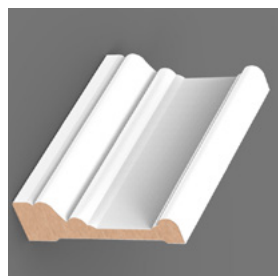
**Casing**  
3/4 x 3-1/2  
PFJ

RQ396



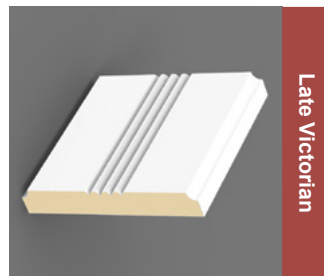
**Casing**  
13/16 x 3-1/2  
POP

RQ341



**Casing**  
1 x 3-1/2  
PFJ, MDF

RQ333\*



Late Victorian

**Casing**  
3/4 x 5  
PFJ

RQ351



**937-224-1141**

# WHAT IS SHIPLAP?

SHIPLAP HAS BECOME AN UMBRELLA NAME FOR THE LOOK OF HORIZONTAL WOOD WALL COVERINGS.

Using exterior siding indoors as a wall covering is a trend that's sticking around. Classic, clean, and an excellent way to add architectural interest to your home.

Being on the same page with your contractor or lumberyard is critical? With the popularity of the shiplap look has come some confusion. Traditional shiplap wood siding is an overlapping wood profile while tongue & groove is an interlocking wood profile.

To you shiplap may mean tongue & groove nickel gap wood siding that is very popular on home cable shows and online. The contractor or lumberyard may envision standard shiplap which is more labor intensive to install and gap correctly.

At the Requarth Co. we stock or can make many beautiful profile options that you will not see on shows or online. We also stock MDF option and options that are prefinished to look like barn with out the dirt, fit, and lead paint issues that you have to deal with on real reclaimed lumber.

FOR MORE INFORMATION PLEASE VISIT THE STORE  
OR CONTACT OUR SALES COUNTER AT 937-224-1141

SHIPLAP  
Standard Shiplap

SHIPLAP  
Pattern 101

SHIPLAP  
Channel Groove - Pattern 141

TONGUE & GROOVE  
Drop Siding - Pattern 106

TONGUE & GROOVE  
Vee Groove - Pattern 122

TONGUE & GROOVE  
Nickel Gap



## HEADERS & PLINTH

POP Poplar, WP Pine, PFJ Primed Finger jointed, RO Red Oak, MDF Medium Density fiberboard

### M Collection

*NEW*



**Architrave**  
1 x 4-1/2  
MDF

RQ510

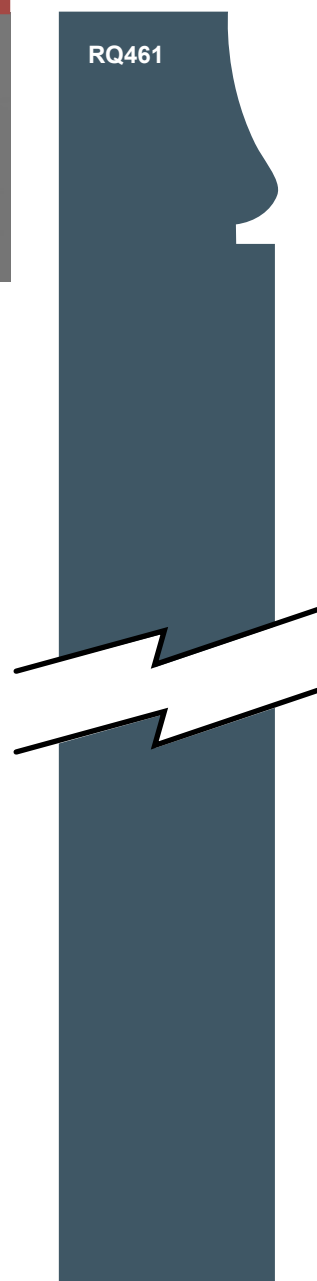


### Late Victorian



**Plinth**  
1-1/8 x 11-1/4  
PFJ

RQ461



### Late Victorian



**Pediment**  
1-3/4 x 2  
PFJ

RQ500



## ARCHITRAVE

An Architrave is an assembly of mouldings (Beam) that sets on top of two columns (Left and right casing). A pediment mould is the cap of an Architrave.



## PLINTH

A Plinth or Plinth Block sits between the casing and the floor. This detail allows for a thick base board to dead end into it without protruding past the face of the casing.



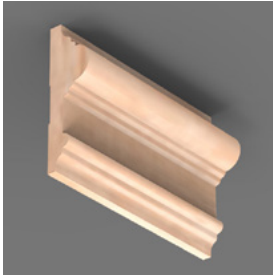
**937-224-1141**



# CHAIR RAIL

POP Poplar, WP Pine, PFJ Primed Finger jointed, RO Red Oak, MDF Medium Density fiberboard

**REQUARTH Co.** Est. 1860  
LUMBER, MILLWORK & KITCHENS



**Chair Rail**  
1 x 3-1/4  
POP

## CHAIR RAIL

Historically chair rail mouldings were positioned much lower than 36" like they are today at.

Contrary to the chair rail's name it was not designed to protect the wall from chair damage. It was designed to make a space feel taller than it is.

Historically chair rail moulding were positioned at  $\frac{1}{5}$  of the wall height from the floor and no higher than  $\frac{1}{4}$  of the wall height from the floor, generally 24" - 32".



**Chair Rail**  
3/4 x 2  
PFJ



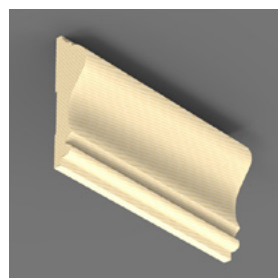
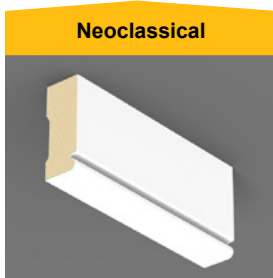
**Chair Rail**  
5/8 x 2-5/8  
WP



**Chair Rail**  
3/4 x 2-3/4  
PFJ



**Chair Rail**  
1 1/16 x 3  
PFJ



## PLATE RAIL

POP Poplar, WP Pine, PFJ Primed Finger jointed, RO Red Oak, MDF Medium Density fiberboard

Late Victorian



**Plate Rail**  
1 x 5  
Non-Stock  
Special order  
PFJ

RQ550

Late Victorian



**Plate Rail Bracket**  
2-13/16 x 3  
Non-Stock  
Special order  
POP

RQ551

## PLATE RAIL

Unlike a chair rail the plate rail was named for its function. It was to keep dishes safe and out of reach of children prior to modern kitchen cabinetry. Traditionally the plate rail was positioned at 72" regardless of ceiling height.

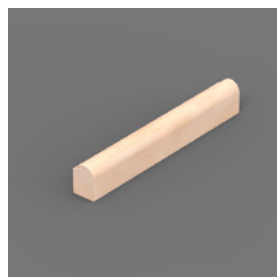


**937-224-1141**

# BASE CAP

POP Poplar, WP Pine, PFJ Primed Finger jointed, RO Red Oak, MDF Medium Density fiberboard

**REQUARTH Co.** Est. 1860  
LUMBER, MILLWORK & KITCHENS



**RQ157**

**Base Cap**  
17/32 x 23/32  
POP



**Base Cap**  
11/16 x 1-1/4  
WP

**RQ166**



*NEW*

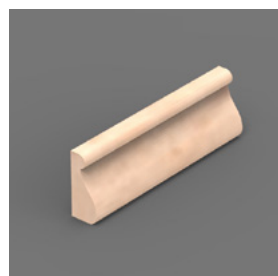
**Base Cap**  
11/16 x 1-3/8  
PFJ

**RQ163**



**Base Cap**  
11/16 x 1-3/8  
POP

**RQ176**



**Base Cap**  
21/23 x 1-1/2  
POP

**RQ186**



Late Victorian

**Base Cap**  
3/4 x 1-1/2  
POP

**RQ112**



Late Victorian

**Base Cap**  
1-1/8 x 1-5/8  
PFJ

**RQ170**

## BASE

POP Poplar, WP Pine, PFJ Primed Finger jointed, RO Red Oak, MDF Medium Density fiberboard



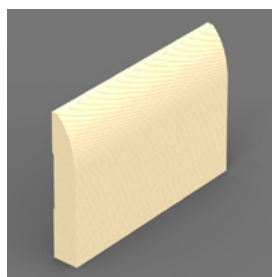
RQ633

**Base**  
1/2 x 3-1/4  
POP



RQ623\*

**Base**  
9/16 x 3-1/4  
MDF, PFJ,  
WP



RQ713

**Base**  
9/16 x 3-1/4  
WP



RQ603

**Base**  
11/16 x 3-1/4  
POP

## Requarth Co. Established in 1860

The Requarth mill traces its origins to a small turning shop at Fourth and Wayne in Dayton. Founded by Frederick August Requarth, we opened our doors in 1860, and are now in our fifth generation of family ownership.

A few years later, we helped out some favorite sons of the area, Orville and Wilbur Wright, when they purchased spruce from us for their early flyers. You'll find us today at the same Monument and Sears Street location in Dayton, where we've been since 1895. Over the years we've built a national reputation for fine custom millwork. Our woodwork graces homes and buildings not just across Greater Dayton, but throughout the Midwest and along the East Coast.

We'd be proud to include you and your project in our timeline.

**937-224-1141**



# BASE

POP Poplar, WP Pine, PFJ Primed Finger jointed, RO Red Oak, MDF Medium Density fiberboard

**REQUARTH Co.**  
Est. 1860  
LUMBER, MILLWORK & KITCHENS



**RQ627**

**Base**  
11/16 x 3-1/4  
PFJ



**RQ620**

**Base**  
1/2 x 4-1/4  
MDF



**RQ620\***

**Base**  
9/16 x 4-1/4  
WP



**RQ637\***

**Base**  
9/16 x 4-1/4  
PFJ, MDF

## BASE

POP Poplar, WP Pine, PFJ Primed Finger jointed, RO Red Oak, MDF Medium Density fiberboard



RQ638\*

**Base**  
1/2 x 4-1/4  
PFJ, MDF



RQ651

**Base**  
11/16 x 4-1/4  
POP



RQ788

**Base**  
11/16 x 4-1/4  
PFJ



RQ656

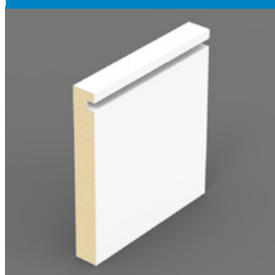
**Base**  
1/2 x 4-3/4  
MDF

**937-224-1141**

# BASE

POP Poplar, WP Pine, PFJ Primed Finger jointed, RO Red Oak, MDF Medium Density fiberboard

**Modern Bungalow**



**Neoclassical**



*NEW*



**RQ778**

**Base**  
11/16 x 5  
PFJ



**RQ798**

**Base**  
11/16 x 5  
PFJ

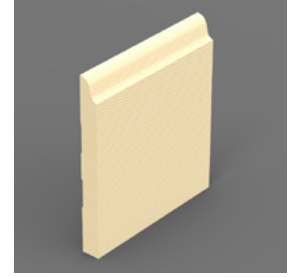


**RQ650**

**Base**  
1/2 x 5-1/8  
PFJ

## BASE

POP Poplar, WP Pine, PFJ Primed Finger jointed, RO Red Oak, MDF Medium Density fiberboard



RQ661

**Base**  
11/16 x 5-1/4  
POP



RQ647\*

**Base**  
5/8 x 5-1/4  
PFJ, MDF



RQ648

**Base**  
9/16 x 5-1/4  
PFJ



RQ658

**Base**  
9/16 x 5-1/4  
PFJ, WP

**937-224-1141**

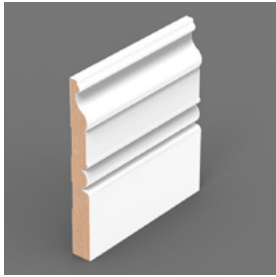


# BASE

POP Poplar, WP Pine, PFJ Primed Finger jointed, RO Red Oak, MDF Medium Density fiberboard

## M Collection

NEW



RQ718\*

**Base**  
5/8 x 5-1/4  
MDF



RQ654

**Base**  
5/8 x 5-1/2  
MDF

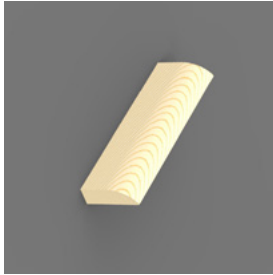


RQ677\*

**Base**  
5/8 x 7-1/4  
PFJ, MDF

## TRIM

POP Poplar, WP Pine, PFJ Primed Finger jointed, RO Red Oak, MDF Medium Density fiberboard



**RQ816**

**Stop**  
7/16 x 1-3/8  
WP



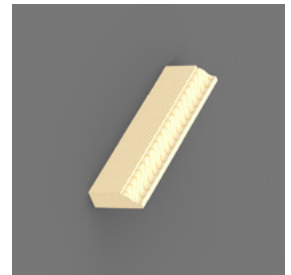
**RQ927**

**Stop**  
1/2 x 1-1/4  
POP



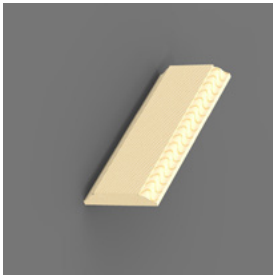
**RQ936**

**Stop**  
11/32 x 1-3/8  
POP



**RQ937\***

**Stop**  
7/16 x 1-1/4  
WP



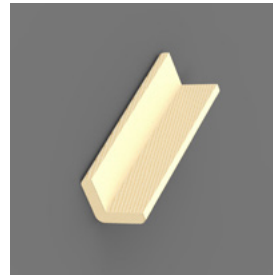
**RQ983**

**Mullion**  
3/8 x 2  
WP



**RQ995**

**Cant (Chamfer)**  
3/4 x 3/4  
WP



**RQ204\***

**Outside Corner**  
1-5/16 x 1-5/16  
WP



**RQ205**

**Outside Corner**  
1-1/8 x 1-1/8  
WP



**RQ1197**

**Stool**  
3/4 x 4-1/4  
POP

**937-224-1141**

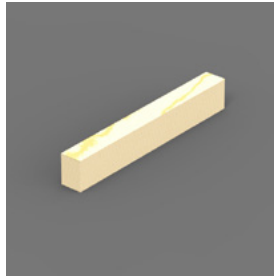
# TRIM

POP Poplar, WP Pine, PFJ Primed Finger jointed, RO Red Oak, MDF Medium Density fiberboard

**REQUARTH Co.**  
Est. 1860  
LUMBER, MILLWORK & KITCHENS

**RQ254\***

**PARTING STOP**  
1/2 x 3/4  
WP



**RQ239**

**PARTING STOP**  
3/4 x 3/4  
WP



**RQ250**

**SCREEN STOCK**  
3/4 x 1-1/2  
POP



**RQ248**

**SCREEN STOCK**  
11/16 x 1-3/4  
WP



**RQ265**

**LATTICE**  
1/4 x 1-11/16  
WP



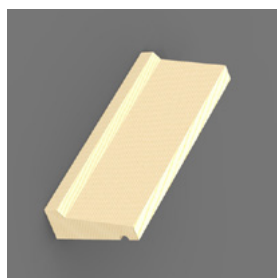
**RQ267**

**LATTICE**  
1/4 x 1-3/8  
WP



## EXTERIOR TRIM & BOARDS

POP Poplar, WP Pine, PFJ Primed Finger jointed, RO Red Oak, MDF Medium Density fiberboard



**RQ196WP  
RQ197PVC**

**Drip Cap**  
1 1/16 x 1-3/4  
WP, PVC



**Brick Mould**  
1-1/4 x 2  
PFJ, WP, PVC

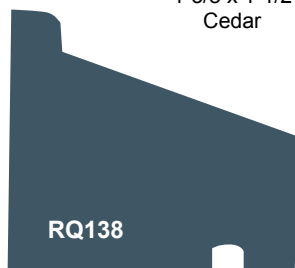


**RQ210**

**Shingle Mould**  
5/8 x 1-5/8  
WP



**Water Table**  
1-3/8 x 1-1/2  
Cedar



## Rough and Surfaced Hardwood.

Rough White Oak, Quarter Sawn White Oak, Red Oak, Hickory, Birch, Cherry, Maple, Mahogany and Walnut are in stock. Call to order surfaced boards, glue ups and custom sizes and thicknesses or to inquire about other species.

### S4S Poplar Boards

Width	Length
3/4" x 4	8', 10', 12', 14', 16'
3/4" x 6	8', 10', 12', 14', 16'
3/4" x 8	8', 10', 12', 14', 16'
3/4" x 10	8', 10', 12', 14', 16'
3/4" x 12	8', 10', 12', 14', 16'

### S4S Red Oak Boards

Width	Length
3/4" x 4	8', 12'
3/4" x 6	8', 12'
3/4" x 8	8', 12'
3/4" x 10	14'

## Eased and Square Edge MDF Boards

### Eased 2 Edge MDF Boards

Width	Length
1" x 4"	16'
1" x 6"	16'

### Square Edge MDF Boards

Width	Length
1" x 4"	16'
1" x 6"	16'
1" x 8"	16'
1" x 12"	16'

# GLOSSARY

## Ceiling Mouldings

Ceiling mouldings cover gaps between walls and ceilings.

### Cornice

Moulding assembly that included the Crown used where walls and ceilings meet.

### Crown Mould

Used where walls and ceilings meet.

### Dentil Mould

A decorative product often used in conjunction with crown mould.

### Cove Mould

Has a concave profile and is used at corners, particularly as ceiling cornice. Small coves may be used as an inside corner guard on walls.

### Bed Mould

Used where walls and ceilings meet. Bed mould can be installed laying flat as a decorative feature.

### Beaded Ceiling

Commonly used for exterior spaces such as porch ceilings. It can also be used on walls as wainscoting.

## Window and Door Mouldings

Window and Door Mouldings trim gaps between and around doors, windows and surrounding walls.

### Brick Mould

Used as exterior door and window casing. A thick moulding, it provides a surface for brick or other siding to butt against.

### Stool

An interior trim member serving as a sash or window-frame cap. Stools may be non-rabbetted, beveled-rabbetted or rabbetted to receive the window-frame sill.

### Casing

Used to trim around door and window openings.

### Stop

As a door trim, stop is nailed to the face of the doorframe to prevent the door from swinging through. As window trim, stop holds the bottom sash of a double-hung window in place. Stop is also used as an apron under window stools.

### Glass Bead

Also called glass stop, cove and bead or putty, is used to hold glass in place.

### Jamb Stock

Used for vertical side members (legs) and the top of a door or window frame (head piece).

### Extension Jambs

Used to extend Andersen window frames in width to meet the wall surface.

## Thresholds

Placed on top of the sill to provide a place for the door to close and seal tight.

### Drip Cap

Applied over exterior window and door frames to keep water from seeping under siding. It is also used to direct water away from window glass.

### Base Mouldings

Base mouldings are applied where floor and walls meet.

### Base Mould

Applied where floor and walls meet, forming a visual foundation. It protects walls from kicks, bumps, furniture, etc.

### Shoe Mould

Applied where base mould meets the floor. It protects the base from damage and can conceal uneven lines or cracks where base meets floor. Quarter round can also be used as a shoe mould.

### Base Cap

Typically used to cap flat stock and create a simple, wide base mould.

## Wall Mouldings

Wall mouldings are used to add visual interest to flat surfaces and protect corners.

### Outside Corner

Used to protect corners or to cover ragged edge where wall covering and painted surfaces meet at outside corner. For inside corner, see quarter round under Miscellaneous Mouldings or cove mould under Ceiling Mouldings.

### Cap Mould

Typically used at the top of wainscoting or paneling. Beaded ceiling is a Popular wainscoting.

### Chair Rail

Applied about one third up from the floor, paralleling base moulding and encircling the room. Originally used to prevent chairs from marring walls, today it is a common decorative detail in traditional and colonial design.

### Panel Mould

Originally used to trim out raised panel wall construction, but is now often used to frame wall coverings for a painted effect.

### Shingle Mould

(see Miscellaneous Mouldings) and bed mould (see Ceiling Mouldings) can also be used as a panel mould.

## Picture Mould

Applied around a room's circumference near the ceiling line and used to support hooks for picture hanging.

## Miscellaneous Mouldings

### Scotia

A concave moulding with an irregular curve, typically used under the nosing of stair treads, on skirt boards or for cornice trim.

### Screen Mould

Similar to screen stock, but has two rounded edges. It takes its name from its application as a moulding to cover seams where screening is fastened to the frame. It is also used to cover edges and seams in a variety of other applications.

### Screen Stock

A versatile moulding that derives its name from being used to cover seams where screening is fastened to the frame. It is also used to cover edges and seams in a variety of other applications, commonly particle board or flakeboard shelf edges.

### Shingle Mould

Originally used on the rake of a building or around exterior window frames. May be used in ways similar to panel mould

### Half Round

Used as a screen mould, bead shelf edge or panel mould.

### Quarter Round

Used as a base shoe, inside corner mould or to cover any 90-degree recessed juncture.

### Cant (Chamfer)

Used in highway and dam construction forms to make a chamfered edge at concrete corners. It is also used where kitchen cabinet tops meet the wall and as a linoleum cove.

### Bar Rail

Installed at the edge of a counter to produce a resting place for elbows.



# CHOOSING THE PERFECT DOOR?

## BEAUTIFUL HOMES HAPPEN BY DESIGN.

Homes have personality whether you are building new or remodeling an existing home. Personality is developed with architecture, finishes, and the items you bring into the home.

When starting a big renovation or new build, begin by making an idea board. It's as simple as cutting and taping images in a notebook, poster, or on a wall. You can even do this online at Houzz.com. This tool will help you get the feel of what you want in your home before a penny has been spent. It will also help you communicate with your contractor and keep your project running smoothly.

- Making an interior door selection should be done while choosing your mouldings to unify the personality of your home.

Interior doors with raised panels, arches, or ogees should be paired up with Colonial, Georgian, Victorian style mouldings.

- Doors with minimal ornamentation and/or flat panels should be paired with mouldings having similar characteristics such as Mission, Craftsman, and Prairie style mouldings.

- Flat panel doors are also paired with Modern style mouldings with sharp angles and no curves.

For more help, see one of our knowledgeable sales associates in the store.



**Masonite**  
Le Chateau, 1 Panel



**Masonite**  
Le Chateau, 2 Panel  
Traditional



**Masonite**  
Le Chateau, 3 Panel  
Equal



**Masonite**  
Le Chateau, 3 Panel  
Mission



**Masonite**  
Le Chateau, 5 Panel  
Equal



**Masonite**  
Le Chateau, 8 Panel



**Masonite**  
Le Chateau, 5 Panel  
Equal



**Masonite**  
Moulded Panel Series, 4 Panel  
Square Smooth

## DIMENSION SOFTWOOD LUMBER

#2 & Better Western Spruce-Pine-Fir (SPF)  
 #2 & Better Premium SPF precut studs  
 #1 Southern Yellow Pine (SYP)  
 #3 & Better Western Red Cedar  
 B Heart Redwood  
 Fire retardant treated wood  
 Preservative treated wood

## ENGINEERED LUMBER

Roof & floor trusses  
 Wood I-joists  
 Laminated veneer lumber (LVL)  
 Laminated strand lumber (LSL)  
 Glulam beams

## BOARDS & SPECIALTY LUMBER

### Softwood

- C & Better Radiata Pine
- #2 Ponderosa Pine
- #2 Southern Yellow Pine (SYP)
- #3 & Better Inland Red Cedar
- B Heart Redwood

### Hardwood

- Red Oak & Poplar (stock)
- Other hardwood species (custom)

### Treated Southern Yellow Pine

- Fire retardant
- Preservative treated

### Manufactured trim

- Boral TruExterior poly-fly ash trim
- Versatec PVC trim
- LP SmartSide composite trim
- TimberTech composite decking

## FIRE RETARDANT TREATED WOOD

#1 SYP dimension  
 #2 SYP boards  
 AC exterior, CDX, & Sturd-I-Floor  
 T&G plywood

## PRESERVATIVE TREATED WOOD

#1 Prime SYP 2x4 & 2x6  
 #1 SYP 2x8, 2x10 & 2x12  
 #2 SYP 2x4 & 2x6 (16' only)  
 Premium SYP 5/4 deck boards  
 Beveled 2x2 balusters  
 Dog-eared treated fence boards  
 CDX treated plywood

## PLYWOOD & PANELS



### NOW STOCKING ZIP Panels

- 7/16" 4x8 and 4x9
- 1/2" 4x8
- 4" & 6" Flashing Tape
- Zip gun and accessories

### Sanded plywood

- AC exterior Radiata Pine
- AC exterior Fir
- AB Marine Fir
- BC Yellow Pine

## Sheathing

- Oriented strand board (OSB)
- SYP CDX & Fir CDX
- Impregnated sheathing
- Zip Panel

## Subflooring

- Sturd-I-Floor T&G SYP & Fir
- OSB T&G
- AdvanTech engineered subfloor

## Plyform, BBOES

## Medium density overlay (MDO)

- G1S & G2S Industrial Grade

## Hardwood plywood—veneer core

- Meranti Iauan, Mahogany, Birch, Poplar, Red Oak, Baltic Birch

## Hardboard, tempered & standard

## Pegboard

## Homosote

## Medium density fiberboard (MDF)

## Particle board

## Sound board

## Upson board

## Cork bulletin boards

## ROOFING

Cedar shakes & shingles  
 15# & 30# felt  
 Ice & Water shield  
 Synfelt roof underlayment  
 TextroFlash  
 Eave edging & flashing  
 Soffit vents

## FLOORING

Somerset hardwood flooring  
 1x4 & 1x6 C & Better SYP  
 #1 Common White Oak  
 #1 Common Red Oak

## DECKING

TimberTech composite deck & railing systems  
 Azek PVC decking  
 Preservative treated wood  
 Cedar & Redwood  
 Ipe hardwood

## DECK SUPPLIES

Composite wood deck screws  
 Deckmaster hidden fasteners  
 Decorative post caps  
 Lattice panels  
 Messmer's deck cleaning products  
 TimberTech DeckLites

## EXTERIOR TRIM



- 1x4, 1x6, 1x8, 1x10, 1x12 - 16' SmartSide Trim
- 5/4x4, 5/4x6, 5/4x8, 5/4x12 - 16' SmartSide Trim
- 48x96 LP Text SmartSoffit

### Boral TruExterior poly-fly ash trim

### Primed Cedar

### Redwood & Cedar

### LP SmartSide primed trim

### Versatec PVC trimboard & drip cap

### LP SmartSide Soffit primed

## SIDING

Cedar bevel (lap)  
 Cedar T&G V-edge  
 Cedar channel groove  
 Cedar clear bevel vertical grain  
 C & Better Southern Yellow Pine  
 Pattern #104, #106, & #116 (SYP) siding  
 James Hardie cement fiber siding  
 LP SmartSide  
 Smooth hardboard X-90  
 Mineral fiber (smooth & wavy)  
 Radiata Pine T-111 in 4" & 8" OC  
 Radiata Pine reverse board & batten, 12" OC  
 Radiata Pine plybead, 2" OC  
 Rough sawn Radiata Pine, plain  
 Rough sawn Fir, primed

## KITCHEN & BATH CABINETRY



### Kitchen & Bath design services

### Cabinetry by:

- Timeless Cabinetry by Requarth Co.
- Greenfield Cabinetry
- Echelon Cabinetry
- UltraCraft Cabinetry
- Mid-Continent Cabinetry

### Countertops

Cambria Quartz  
 Cabinet hardware  
 Vanities

## INSULATION

Fiberglass roll insulation  
 Roxul batt insulation  
 Tyvek house wrap  
 RexWrap house wrap  
 FlexWrap  
 StuccoWrap  
 StraightFlash  
 Styrofoam panels  
 DuraMate  
 Sillseal

## CUSTOM MILLWORK

Unique products for residential, commercial, & industrial applications

## MOULDINGS

White Pine, Oak & Poplar mouldings  
 Ultralite MDF moulding  
 Jamb & jamb stock  
 Wood & fiberglass columns

## STAIRS & TREADS

LJ Smith stair parts & railing systems

## WINDOW & PATIO DOORS

Andersen windows & doors  
 Eagle windows & doors  
 Silverline windows  
 Jeld-Wen windows

## Masonite patio doors

## DOORS

Simpson wood doors  
 Masonite steel & fiberglass doors  
 Thermo Tru steel & fiberglass doors  
 Plastpro door  
 Flush wood doors  
 Birch hollow core pre-hung  
 Birch & Oak solid core  
 Birch hollow core bi-fold  
 Six panel hardboard doors  
 Pre-hung in smooth & textured  
 Door louvers & lites

## DRYWALL & ACCESSORIES

Drywall/gypsum board  
 Drywall sponge sander  
 Corner bead, j-mold, mud, mud pan,  
 Taping & putty knives  
 Fiber Rock  
 Joint Cement

## NAILS & FASTENERS

Nails, wood screws, nuts, bolts & washers  
 Collated fasteners for nail guns  
 Bostich, Paslode & Generic  
 Tapcon & FastenMaster screws

## JOIST HANGERS & CONNECTORS

Simpson Strong-Tie standard connectors  
 Z-Max galvanized products  
 OZCO decorative structural wood connectors

## SCHLAGE LOCKS

Residential locks & hardware  
 Commercial locks & hardware

## ADHESIVES

Titebond construction adhesive  
 Titebond waterproof wood glue  
 Construction cement  
 Plastic resin glue  
 MDF glue & activation  
 Franklin Multibond mastic

## CAULKS, SEALANTS & FILLERS

Silicone & acrylic latex caulks  
 Blacktop & concrete repair  
 Water putty  
 Wood filler  
 Titebond WeatherMaster  
 QFS Kwik foam sealant

## HARDWARE, TOOLS & BITS

Attic ladders  
 Adjustable basement jackposts  
 Door & closet hardware  
 Saw blades  
 Hardie siding cutting shears & blades  
 Router & drill bits  
 TigerClaw guns



**REQUARTH Co.**  
Est. 1860  
 LUMBER, MILLWORK & KITCHENS

**Requarth Co.**  
 447 East Monument Avenue  
 P.O. BOX 38  
 Dayton, Ohio 45401-0038

**937-224-1141**  
**requarth.com**

EVERY JOB DONE RIGHT.

